

Description:

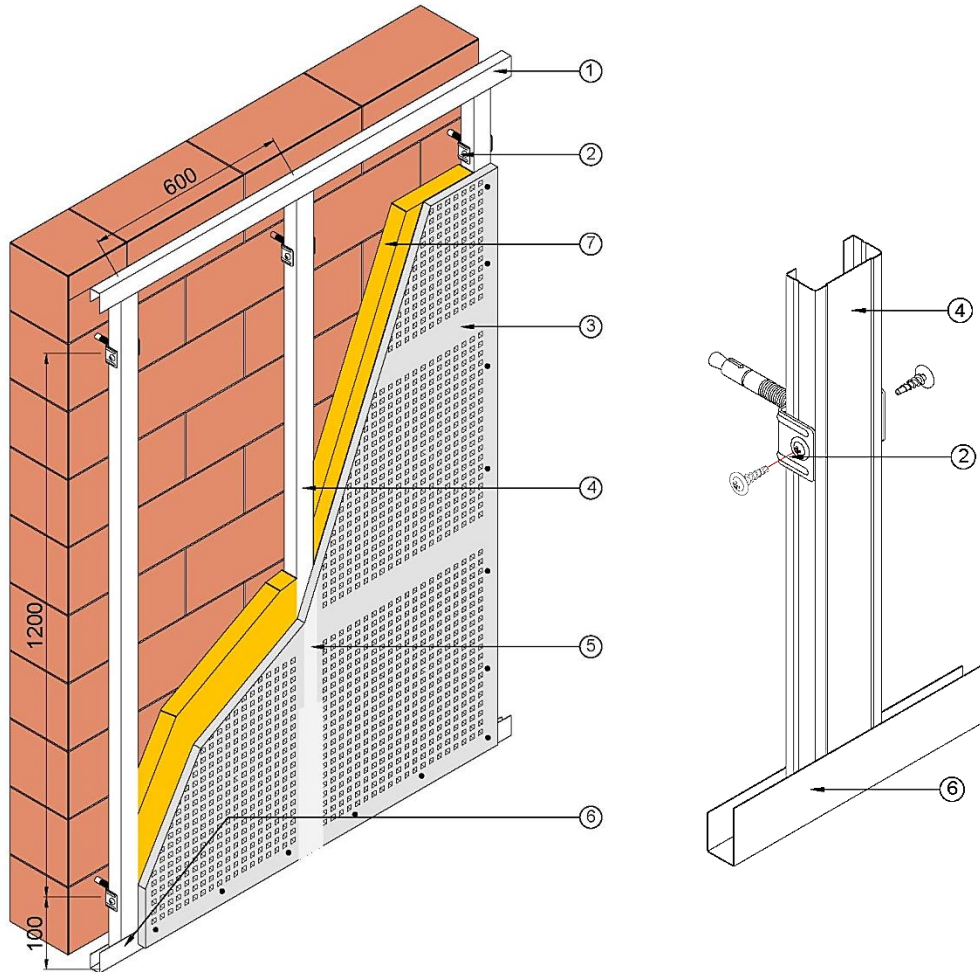
Gyproc GypLyner® System comprising of single layer **Gyproc Gyptone® Quattro41 12.5mm** screw-fixed at max. 300mm centres to the framing system formed by **GypFrame® Channel 36x16 (Part No. C3616)** (BMT=0.42mm), spaced at 600mm centres fixed onto **GypFrame® Wall Track (Part No. WT16)** (BMT=0.42mm), and fixed **Adjustable Wall Bracket (Part No. WB3616A)** spaced at 1200mm vertical; giving **maximum air gap of 75mm** to masonry backing wall and board joints are secured with **Gyproc Paper Tape** and finished with **ProTop® Joint Compound** for a seamless finish.

Area of Application:

Suitable for internal use installing at general area that require sound insulation performance

Important Note:

1. Anchorage to be embedded properly in solid wall substrate.
2. Must have air cavity to perform on acoustic performance



Key Information:

- | | |
|--|--|
| <ol style="list-style-type: none"> 1. GypFrame® Wall Track (Part No. WT16) fixed to soffit using expansion bolt 2. Adjustable Wall Bracket (Part No. WB3616A) 3. Gyproc <i>Gyptone® Quattro 41 12.5mm</i> | <ol style="list-style-type: none"> 4. GypFrame® Channel 36x16 (Part No. C3616) 5. Gyproc ProTop® All Purpose Ready-mixed Joint Compound 6. GypFrame® Wall Track (Part No. WT16) fixed to floor using expansion bolt 7. Insulation – Stone wool 50mm x 40kg/m³ |
|--|--|

Overall Thickness (wall lining only)	Overall Weight (Board Only)	Maximum Height (L/240 @ 0.25kPa)	Acoustic Performance, NRC	Maximum Air Gap	Minimum Air Gap
53.5mm	9kg/m ²	According to substrate height	0.75	50mm	25mm

Disclaimer:

This document remained the property of Saint-Gobain. Please contact Gyproc Technical Department for information on performance and method of installation.

Components	Description	Qty / m ² (est.)
GypFrame® Channel 36x16	BMT = 0.42mm; Length = 3.60m	0.43 piece
GypFrame® Wall Track	BMT = 0.42mm; Length = 3.00m	0.21 piece
Adjustable Wall Bracket	Fixing Bracket	2.56 piece
Gyproc Gyptone® Quattro41 12.5mm	Standard size = 1200mm x 2400mm	0.34 piece
Anchor Bolt or equivalent		3.4 piece
Drywall Screw 25mm**		13 piece
Wafer Head Screw***		5.12 piece
Gyproc ProTop® Joint Compound	Weight = 28kg per bucket	0.02 bucket
Gyproc Paper Tape	Width = 50mm; Length = 150m	0.02 roll
Insulation Material, i.e. stone wool (by others)	Thickness = 50mm; Density = 40kg/m ³	1.40 piece

Note:

*The material estimation is derived from 100sq.m wall with 3000mm height

** Length must be 10mm longer than total fixed thickness

*** Use wafer head screw in the fixing of metal to metal

Disclaimer: