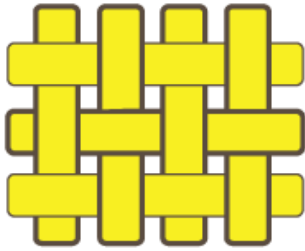


Weber Fiberglass Netting

Reinforced fibreglass mesh



Weber Fiberglass Netting is a reinforced fibreglass mesh, providing strong reinforcement for most waterproofing emulsions.

PRODUCT BENEFITS



FIBRE REINFORCEMENT



EASY APPLICATION



CRACK BRIDGING

USES

Suitable for joints on pre-fabricated panel wall, dry wall, plaster ceiling, and repair of cracks.

ADVANTAGES

- Great strength
- Easy to use
- Will not trap air that cause blisters and bubbles
- Minimum wastage

TECHNICAL DATA & PHYSICAL PROPERTIES

Appearance	Odourless Cloth Netting
Solubility	Non-soluble fiberglass
Combustibility	Non-combustible
Estimated Density (counts per inch)	Warp: 10 / Weft: 10
Gross Weight	Approx. 50 gm/m ²
Tensile Strength	Approx. Warp: 280 N per 50 mm Approx. Weft: 300 N per 50 mm

Specifications are subject to change without notification. Results shown are typical but reflect laboratory test procedures conducted in laboratory conditions. Actual field performance will depend on installation methods and site conditions.

PROCEDURE & APPLICATION



Application

Apply an even coat of approx. 1-1.5 mm of the waterproofing coat or leveling compound with a smooth-edged trowel. Place the mesh over while the coat is still wet and gently press it in so that the Weber Fiberglass Netting is completely covered. Let the waterproofing coat or leveling compound completely dry and apply a second coat or compound if needed.

STORAGE & PACKING

Weber Fiberglass Netting is available in rolls of 100m x 1m.

HEALTH & SAFETY

Recommended to wear gloves and goggles and always ensure good working safe-practices when handling. Wear proper safety gear. Weber Fiberglass Netting may irritate. Seek medical attention if irritation persists.

*Note: Because it is not possible to give specific instructions for the various site conditions or to control the applications, the information on this Technical Data Sheet is for general guidance only. Saint-Gobain (Singapore) Pte Ltd reserves the rights to amend the contents of the data sheet at its sole discretion. (Jun '23)



SAINT-GOBAIN (SINGAPORE) PTE LTD

2 Venture Drive, #13-18,
Vision Exchange, Singapore 608526

(65) 63308288 (65) 63308289

eis.info@saint-gobain.com www.saint-gobain.sg

SAINT-GOBAIN WEBER (M) SDN BHD

No 29 & 31, Jalan TIAJ 2/1, Taman Industri Alam Jaya,
42300 Bandar Puncak Alam, Selangor D E, Malaysia

(603) 60389498/97/89 (603) 6038 9507

info.webermalaysia@saint-gobain.com www.mys.weber

