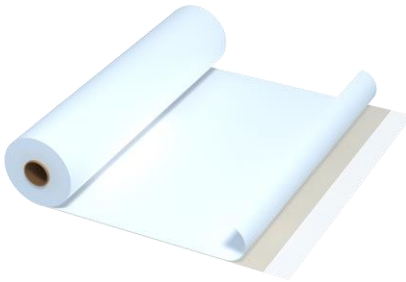


## Weberdry HDPE

(formerly Weberdry Aquaprufe HDPE)

High density polyethylene, self-adhesive waterproofing membrane



Weberdry HDPE is a multi-layer composite waterproof membrane with superior performance. It is composed of high-density polyethylene (HDPE) sheets, high-polymer self-adhesive layer and anti-adhesivity release liner.

### PRODUCT BENEFITS



EXCELLENT STRENGTH



EASY TO APPLY



EXCELLENT ELONGATION

### USES

Weberdry HDPE is for floors, side walls in underground works, tunnels, etc. The concrete in the post-cast gradually crosslinks and meshes up with the membrane's self-adhesive layer.

### ADVANTAGES

- Excellent strength and bonding
- High elongation
- Corrosion resistance
- Excellent UV aging and heat aging resistance
- Excellent durability, good chemical stability
- Impact, puncture and scratch resistance

### TECHNICAL DATA & PHYSICAL PROPERTIES

**Dimensional Stability** -0.23 % (Longitudinal); 0.04 % (Transverse)  
(SS 374: 1994 (2017), Appendix A)

Chemical Immersion & Thermal Ageing	Before	After (% change)			
		10% NaCl	Saturated Lime	5-6% H <sub>2</sub> SO <sub>3</sub>	
<b>Membrane Thickness</b> (DIN EN ISO 2286-3: 2016)	1.21 mm	-0.3	4.7	0.8	
<b>Tensile Strength</b> (SS 374: 1994 (2017) Appendix B)	Longitudinal	31.55 MPa	-1.1	-2.7	-5.5
	Transverse	28.66 MPa	-0.1	-2.1	-1.7
<b>Elongation at Break</b> (SS 374: 1994 (2017) Appendix B)	Longitudinal	914 %	2.7	0.5	-3.2
	Transverse	1230 %	-0.8	-0.8	1.6
<b>Puncture Resistance, (N)</b> (ASTM E154/E154M-08a (2019)e1)	1118	-0.7	- 0.1	5.5	
<b>Resistance to Hydrostatic Test</b> (DIN 16726: 2017-08, Clause 5.11)	> 50 m (No leakage)				
<b>Peel Adhesion to Concrete</b> (ASTM D903-98 (2017))	2668 N/m	8.7	8.5	9.0	

Specifications are subject to change without notification. Results shown are typical but reflect laboratory test procedures conducted in laboratory conditions. Actual field performance will depend on installation methods and site conditions.

**SAINT-GOBAIN (SINGAPORE) PTE LTD**

2 Venture Drive, #13-18,  
Vision Exchange, Singapore 608526

(65) 63308288 (65) 63308289

eis.info@saint-gobain.com www.saint-gobain.sg

**SAINT-GOBAIN WEBER (M) SDN BHD**

No 29 & 31, Jalan TIAJ 2/1, Taman Industri Alam Jaya,  
42300 Bandar Puncak Alam, Selangor D E, Malaysia

(603) 60389498/97/89 (603) 6038 9507

info.webermalaysia@saint-gobain.com www.saint-gobain.my

High density polyethylene, self-adhesive  
waterproofing membrane

**PROCEDURE & APPLICATION**



**Application**

Clean the substrate and snap the line for positioning. Apply the waterproofing membrane on the large surface. Perform overlapping treatment and apply detail treatment. Carry out onsite inspection and tie the rebar.

**STORAGE & PACKING**

Weberdry HDPE is available in rolls of 20m x 1m x 1.2mm.  
Weberdry HDPE should be stored in a sheltered area protected against sunlight and UV radiation. Rolls should be stored in a vertical position on a smooth floor so as not to damage the edges.

\*Note: Because it is not possible to give specific instructions for the various site conditions or to control the applications, the information on this Technical Data Sheet is for general guidance only. Saint-Gobain reserves the rights to amend the contents of the data sheet at its sole discretion. (Feb'24)

**SAINT-GOBAIN (SINGAPORE) PTE LTD**

2 Venture Drive, #13-18,  
Vision Exchange, Singapore 608526

(65) 63308288 (65) 63308289

eis.info@saint-gobain.com www.saint-gobain.sg

**SAINT-GOBAIN WEBER (M) SDN BHD**

No 29 & 31, Jalan TIAJ 2/1, Taman Industri Alam Jaya,  
42300 Bandar Puncak Alam, Selangor D E, Malaysia

(603) 60389498/97/89 (603) 6038 9507

info.webermalaysia@saint-gobain.com www.saint-gobain.my

