

**Description:**

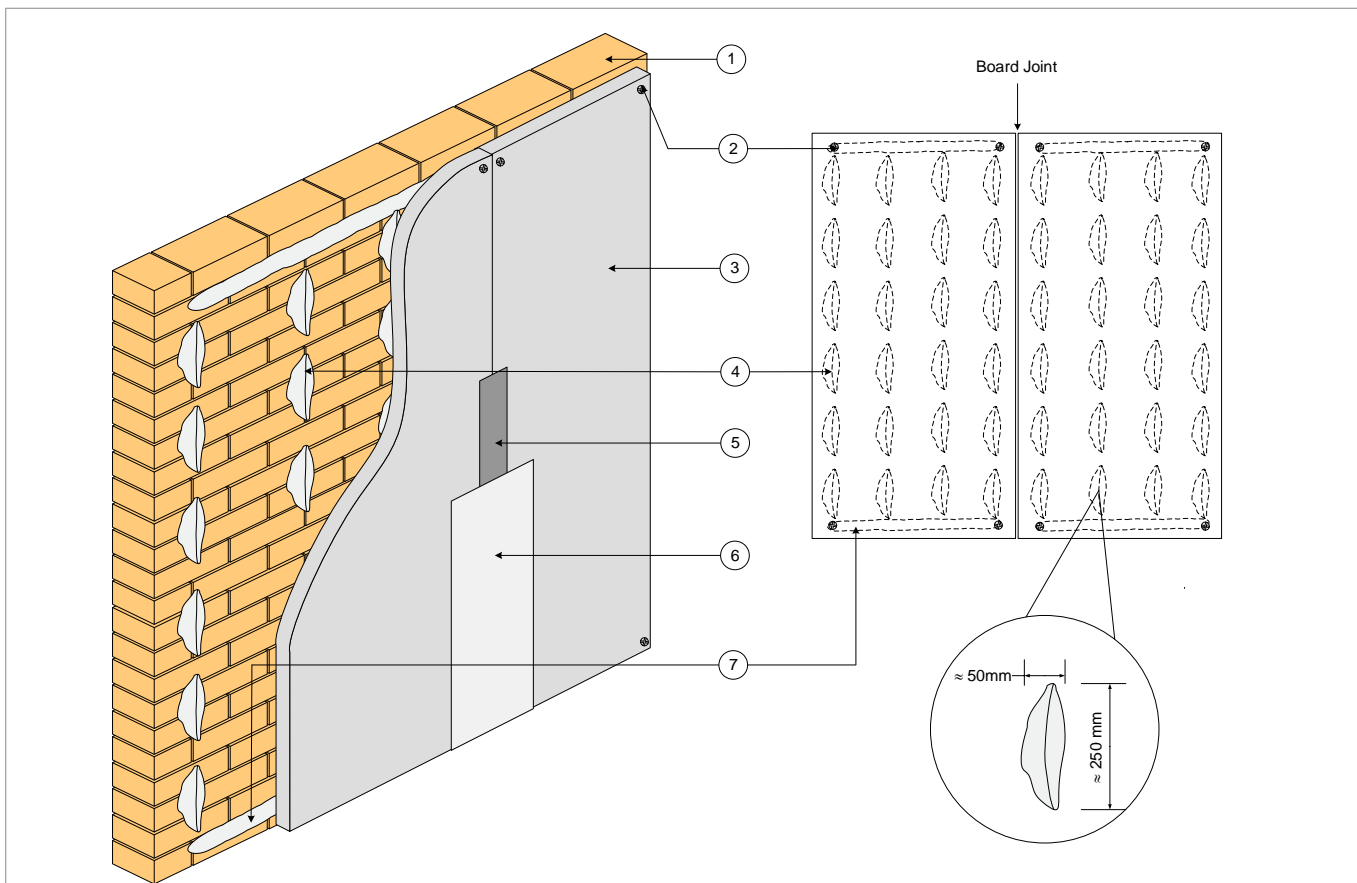
**Gyproc DriLyner® System** comprising of **Gyproc BaseLine® 12.5mm** lined onto existing wall using **ProStick™ Dri-Wall Adhesive**, placed in four vertical rows of at least **six dabs of size 250mm x 50mm** and full dabs for each piece of standard board size (1220mm x 2440mm) and for wall perimeters and around openings, providing **maximum air gap up to 20mm**; secured with **4 units of nylon wall plugs** at board corners after 48 hours of application of **ProStick™ Dri-Wall Adhesive**; board joints secured with **Gyproc Paper Tape** and finished with **ProTop® Joint Compound** for a seamless finish.

**Area of Application:**

Suitable for internal use installing at general area of all segments, i.e. office, shelter, etc.

**Important Note:**

Prerequisite : deviation of levelling on wall substrate straightness to be  $\leq 25$ .



**Key Information:**

- |   |   |
|---|---|
| <ol style="list-style-type: none"> <li>1. Masonry Wall</li> <li>2. Nylon Wall Plug</li> <li>3. Gyproc <b>BaseLine® 12.5mm</b> fixed to existing wall</li> <li>4. Gyproc ProStick™ DriWall Adhesive (4 vertical row of six dabs for a full board (4x8))</li> </ol> | <ol style="list-style-type: none"> <li>5. Gyproc paper Tape</li> <li>6. Gyproc ProTop® All Purpose Ready-mixed Joint Compound</li> <li>7. ProStick™ DriWall Adhesive (continuous dabs at top and bottom of wall)</li> </ol> |
|---|---|

Overall Thickness	Overall Weight (approx.)	Maximum Air Gap	Minimum Air Gap
22.5 - 32.5mm	8kg/m <sup>2</sup>	20mm	10mm

Disclaimer:

This document remained the property of Saint-Gobain. Please contact Gyproc Technical Department for information on performance and method of installation.

Components	Description	Qty / m <sup>2</sup> (est.)*
Gyproc ProStick™ Dri-Wall Adhesive**	Weight = 25 kg per bag	0.30 bag
Gyproc BaseLine® 12.5mm	Standard size = 1220mm x 2440mm	0.34 piece
Nylon Wall Plug		1.35 piece
Gyproc ProTop® Joint Compound	Weight = 28kg per bucket	0.02 bucket
Gyproc Paper Tape	Width = 50mm; Length = 150m	0.02 roll

Note:

\*The material estimation is derived from 100sq.m wall with 3000mm height

\*\* ProStick™ Dri-Wall Adhesive coverage is 20% of total board surface area

Disclaimer:

This document remained the property of Saint-Gobain. Please contact Gyproc Technical Department for information on performance and method of installation.