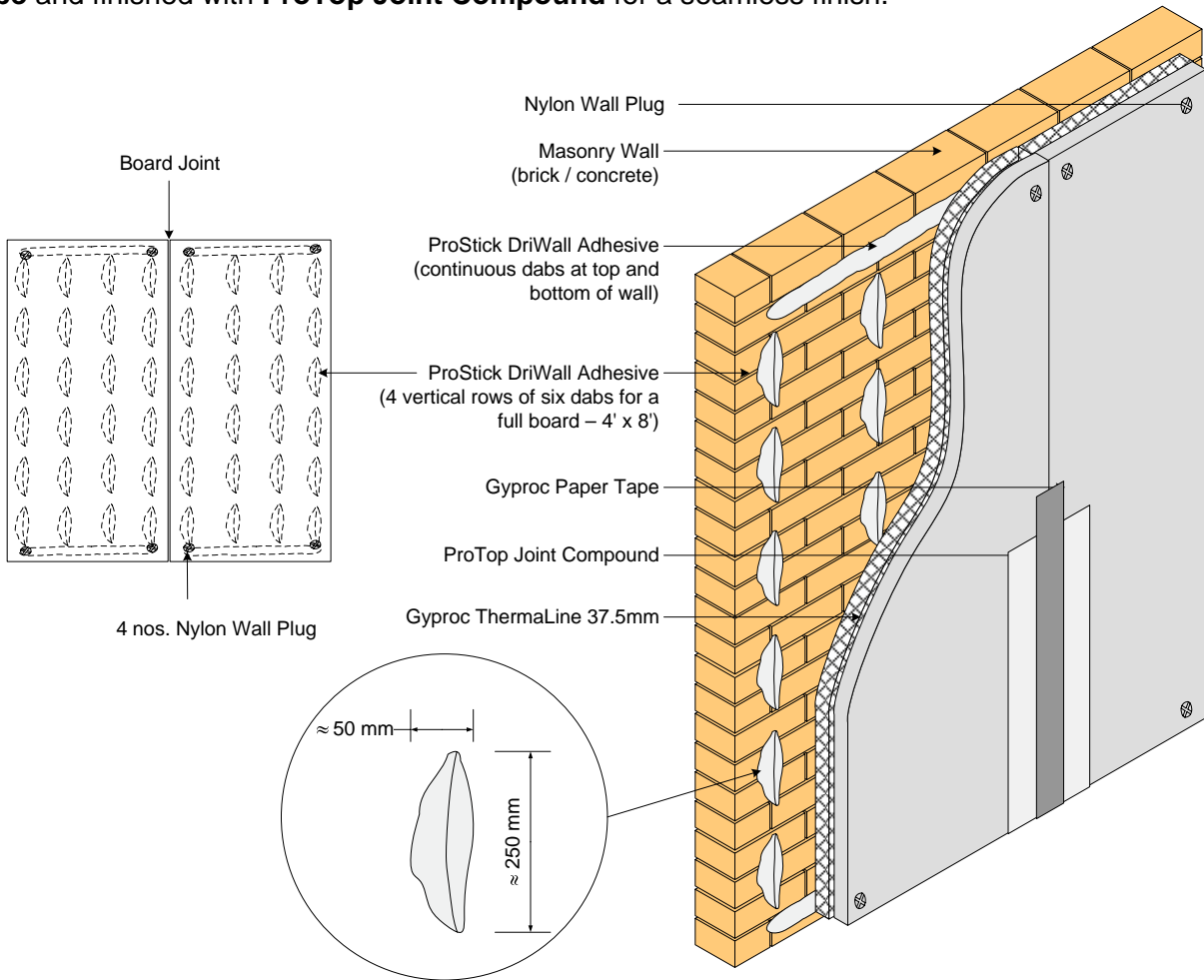


Gyproc Specification Guide

(DriLyner – SLTHERL 37.5)

Gyproc DriLyner System comprising of **Gyproc ThermoLine 37.5mm** lined onto existing wall using **ProStick Dri-Wall Adhesive**, placed in four vertical rows of at least **six dabs of size 250mm x 50mm** and full dabs for each piece of standard board size (1220mm x 2440mm) and for wall perimeters and around openings, providing **maximum air gap up to 20mm**; secured with **4 units of nylon wall plugs** at board corners after 48 hours of application of ProStick Dri-Wall Adhesive; board joints secured with **Gyproc Paper Tape** and finished with **ProTop Joint Compound** for a seamless finish.



Overall Width (DriLyner only)	Overall Weight (DriLyner only)	R-value of ThermoLine 37.5mm	Maximum Air Gap	Minimum Air Gap
57 ± 2 mm	15 kg/m ²	0.683 m ² .K/W	20mm	10mm

Components	Description	Qty / m ² (est.)*
ProStick Dri-Wall Adhesive**	Weight = 25 kg per bag	0.30 bag
Gyproc ThermoLine 37.5mm	Standard size = 4' x 8'	0.34 piece
Nylon Wall Plug		1.35 piece
ProTop Joint Compound	Weight = 28kg per bucket	0.02 bucket
Gyproc Paper Tape	Width = 50mm; Length = 150m	0.02 roll

*The material estimation is derived from 100sq.m wall with 2440mm height

** ProStick Dri-Wall Adhesive coverage is 20% of total board surface area