

DURaflex
SAINT-GOBAIN

FIRESTOP

Calcium Silicate Solutions

Fire Safe, Strong and Durable


SAINT-GOBAIN

DURAf^{ft}ex
SAINT-GOBAIN

FIRESTOP



SINGAPORE
**GREEN
BUILDING
PRODUCT**
S G B C

SCBP 4622



DESCRIPTION

DURAf^{ft}ex Firestop is a carefully engineered calcium silicate board, consisting of cement, fibre, perlite, aluminium powder, mica, and vermiculite. They enhance the fire-resistant performance of protective system while retaining its durability and dimensional stability features throughout the working life span of material.

APPLICATION

DURAf^{ft}ex Firestop is suitable for many protective applications such as partitions, concealed ceilings, ductworks, M&E enclosures, etc. DURAf^{ft}ex Firestop is used in areas where a high-performance fire rating system is required, an excellent option for interior designers and contractors.

PROPERTIES

Board colour: Light grey colour

Board thickness: 9mm, 12mm, 15mm

Board printing: Reverse - Product name, standard, size, date of manufacture, lot number (for board ≤10mm

thick). Edge - Product name, standard, size, date of manufacture, lot number (for board ≥12mm)

STANDARDS

ASTM C1186 - Standard specification for calcium silicate sheets. Type B Grade I.

BS EN 13501- Fire Classification Class A1 non combustible

The Saint-Gobain logo, featuring a stylized red and blue bar chart above the text 'SAINT-GOBAIN' in blue capital letters.

BOARD RANGE

NOMINAL THICKNESS (mm)	WIDTH x LENGTH (mm)	EDGE TYPE	NOMINAL SURFACE DENSITY (kg/m ³)	WEIGHT PER BOARD
9.0	1220 x 2440	SE RE	9.23	27.5
12.0	1220 x 2440	SE RE	12.30	36.6
15.0	1220 x 2440	SE RE	15.38	45.8
Others	Customized size*	-	-	-

RE = Recessed Edge; SE = Square Edge

*Customized order requires minimum lead-time and quantity.

Note: All weights are approximate.

TECHNICAL INFORMATION

CHARACTERISTICS	VALUE
Flexural Strength	≥ 4 MPa
Moisture Movement	≤ 0.05%
Water Absorption	≤ 60%
Moisture Content	≤ 15%

Emission rate/Hazardous substances

CLAUSE	TEST PARAMETERS	TEST METHOD	UNIT	RESULT	SGBC CRITERIA	REMARKS
A5	Avoidance of Hazardous Substances					
i)	Cadmium (Cd)	IEC 62321- 5	mg/kg	Not detected	<100	Pass
ii)	Lead (Pb)		mg/kg	Not detected	< 1000	Pass
iii)	Mercury (Hg)	IEC 62321 - 4	mg/kg	Not detected	< 1000	Pass
iv)	Hexavalent Chromium (Cr 6+)	IEC 62321 - 7 - 2	mg/kg	Not detected	< 1000	Pass
B1	Emission Analysis (After 7 days)					
i)	TVOC emission	ISO 16000-9	mg/kg ³	0.03	< 0.1	Pass
ii)	Formaldehyde emission		mg/kg ³	Not detected	<0.01	Pass

INSTALLATION

General

Follow all relevant health and safety regulations on-site, including wearing personal protective equipment. These notes provide general guidance; specific project requirements should be considered in practice.

Storage

Store DURAflex Firestop on a firm, flat, level surface. If stored outdoors temporarily, keep boards off the ground and cover securely with anchored polythene or tarpaulin to protect from damp and weather.



Handling

Carry the board on its edge with two people, lifting in a vertical position. Avoid lifting with the flat face parallel to the ground, and consider the board's weight when handling.



Cutting

Place the board on the cutting table and measure the required size according to the ceiling grid. Use a circular saw to cut along the marked line.



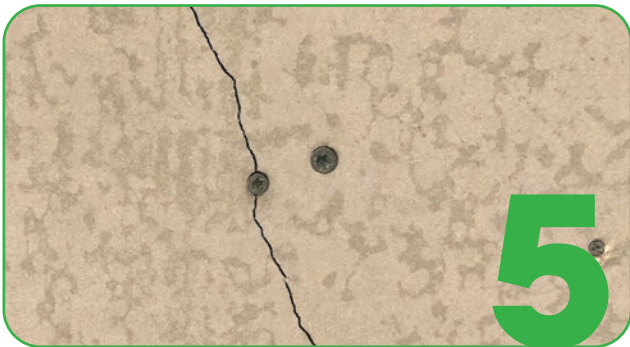
Fixing

Install DURAflex Firestop on suitable metal framing with the printed face inward, securing with countersinking screws at least 12 mm from edges and ends of the board. For partitions and walls, space screws max 200 mm apart at all frame points.



Joint Treatment

Arrange a visible 4-5 mm joint every 4 m or at every three-board joint, filling with specialised sealant for fire and acoustic performance. For normal joints, leave a 2-3 mm gap and fill with specialist joint compound.



Repair

If there is obvious surface damage or cracking on the DURAflex Firestop board, replace it. For minor damage, apply a fire-rated sealant to caulk the affected area, then plaster the surface for a smooth finish.



Finishing

Use a specialist jointing compound for a smooth, crack-free surface ready for priming and decoration. For painting, joint the boards with the compound and decorate promptly once dry.

DURAf^{flex}
SAINT-GOBAIN

FIRESTOP



SAINT-GOBAIN

Saint-Gobain Malaysia
Level 19, Tower 5,
Avenue 7 The Horizon,
Bangsar South, 59200,
Wilayah Persekutuan Kuala Lumpur,
Malaysia
www.saint-gobain.my

Saint-Gobain Singapore
2 Venture Drive, #13-18,
Vision Exchange,
Singapore 608526
www.saint-gobain.sg

The images provided are for reference only. Kindly obtain confirmation from Saint-Gobain Technical Support Team before submission of specification for any project. The information in this literature is accurate at the time of publishing. The publisher reserves all rights to revise the product specifications without prior notice. It is the user's responsibility to ensure that the information communicated here is current before use and that the information provided here is for guidance only. Users must ensure that they are fully conversant with the products and systems before specification or installation.